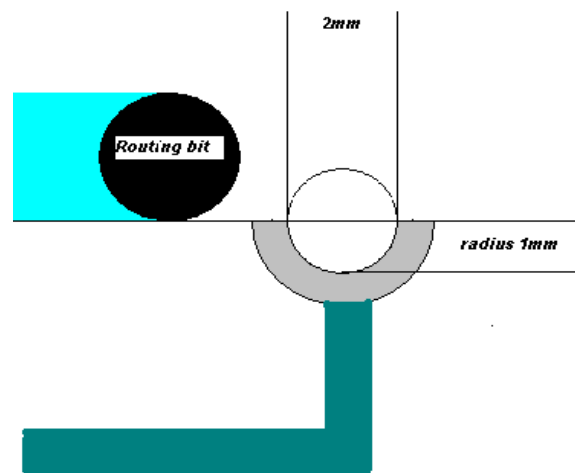


Design rules:

Almost any shape can be created by routing, however a few basic rules must be observed:

- PCB-Pool[®] uses two types of routing bits: 1.0mm and 2.0mm
- All structures and copper information on the board must be 0,5mm clear from the routing contour.
 - Plated drills on the edge of the pcb, which should be cut by the contour, must have a diameter of 2,0mm or more and having a lasting radius of 1.0mm respectively (Picture 1)
- Outer contours can shape any angle while inner contours will produce at least the radius of the routing bit.
- Production tolerance is +/- 0,1mm

Abb. 1

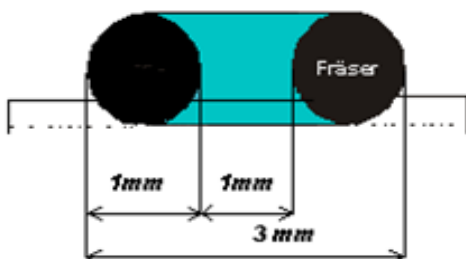


Minimum Slotsize:

The minimum Slotsize is: 1mm x 3mm
 The gap between Start- and Endpoint should be 1mm.

Right

Startpoint Endpoint



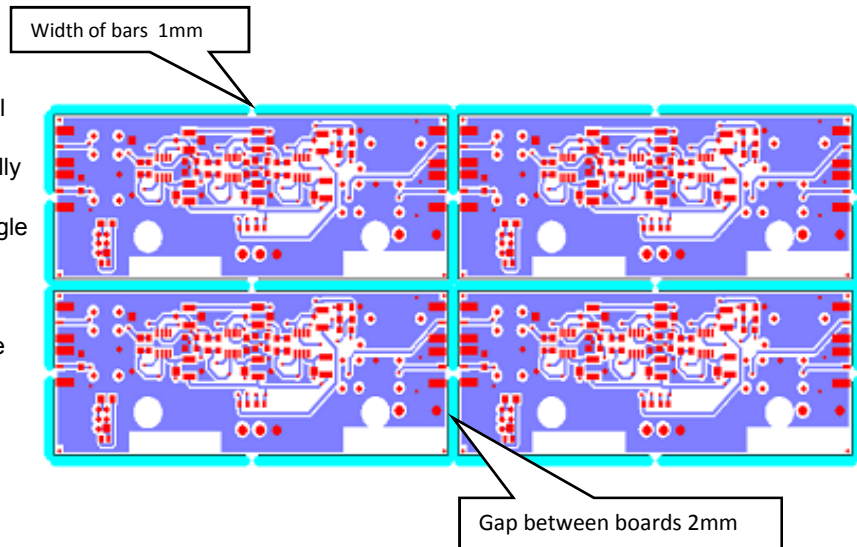
Wrong



Routing boards on pips:

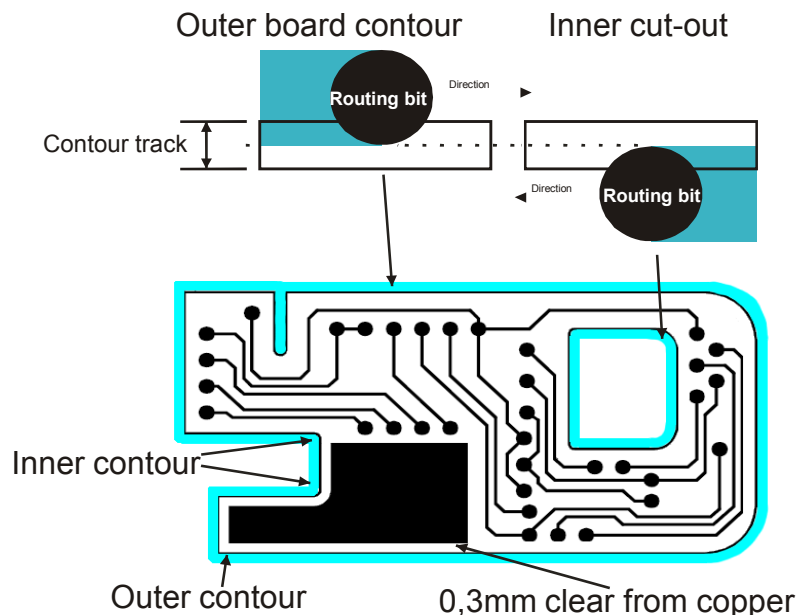
PCB-Pool[®] can rout your boards with small bars keeping them together in a multi – up. The boards can be easily separated manually e.g. after reflow soldering. The width of the bars is 1.0mm and the gap between the single boards must be 2.0mm.

Please consider that we have to charge a special fee of € 30.68 to rout on pips. Even if the contour is provided with the layout, the routing track must always be designed and customized manually in our CAM.



Routing - outline:

The exact outer margin of the routing contour is defined by the middle of the contour track used to define the outlines of the board; the radius of the routing bit will be compensated.



CM - SO - 003 / D / 2009